

## COMPANY HISTORY

Gnomon, Inc. is a small woman-owned business, incorporated in 1994.

Our work focuses on complex projects that rely on data automation and geographic information to advance the mission of resource management.

The firm has undertaken more than 300 projects since its inception.

## PHILOSOPHY

We believe that information is an essential component to every effective decision.

Our approach is to listen to client needs and then utilize our resources to meet those needs.

We excel in devising ways to make information more available, so that you can make well-informed decisions.

## PARTNERS

**HISTORIC  
INSIGHT**

**Zeier & Associates, LLC**  
119 Tradewind Street  
Clinton, Tennessee 37716  
775.315.3002

**PLATEAU**  
ARCHAEOLOGICAL INVESTIGATIONS, LLC

## WHAT'S A GNOMON?

*(nō'môn) [Greek, that which reveals]*

- The upright portion of a sun dial that casts a shadow.
- A column erected perpendicular to the horizon.
- The best firm to meet your needs.

## WHO IS GNOMON?

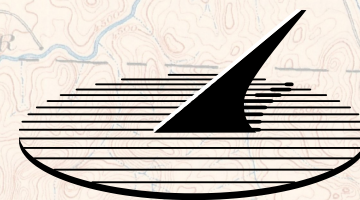
- Cary Ingbar (MA), President
- Eric Ingbar (MA), Director
- Adam Johnson, GIS Programmer / Manager
- Michael Drews, Sr. Archaeologist, Cultural Resources Project Manager
- Jeremy Hall (MA, RPA, GISP) Field Director / GIS Specialist
- Mary Parrish (BA) Archaeologist

Gnomon, Inc.



1601 Fairview Drive, Suite F  
Carson City, Nevada 89701  
Phone/Fax: 775-885-2305  
Email: [admin@gnomon.com](mailto:admin@gnomon.com)  
[www.gnomon.com](http://www.gnomon.com)

# Gnomon, Inc.



**Geographic Information Systems**

**Cultural Resource Professionals**

**Cartographic Services**

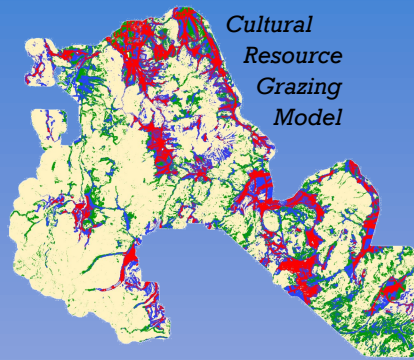
**Database Design**





## GIS SERVICES

- Environmental
  - Management Modeling
  - 3D Analysis
- Cultural Resources
  - Predictive Modeling
  - Georeference & Digitize
  - Historical Imagery
  - Records Management
- Community Development & Planning
  - County Infrastructure Management
  - Assessor Page Updates
  - Geocoding
- GIS Training & Support
- Large Format Printing
- ESRI Software Sales



## CULTURAL RESOURCE MANAGEMENT

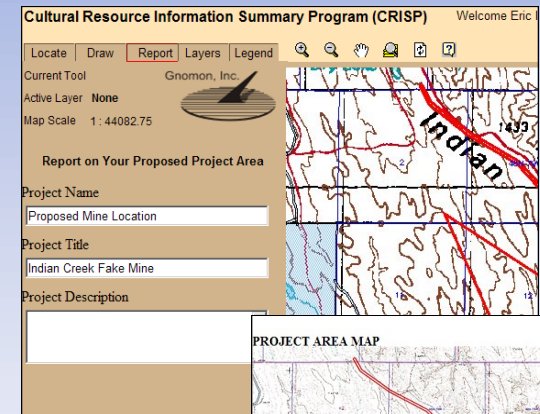
- Federal, State, & Local Regulatory Compliance
- Records Search & Literature Review
- Historic Contexts
- Archaeological & Architectural Inventories
- National Register Determinations
- Lithic & Faunal Analysis
- Treatment & Data Recovery Plans
- Memorandum of Agreements & Programmatic Agreements
- GPS Field Collection & Data Reduction
- GIS Mapping & Database Analysis



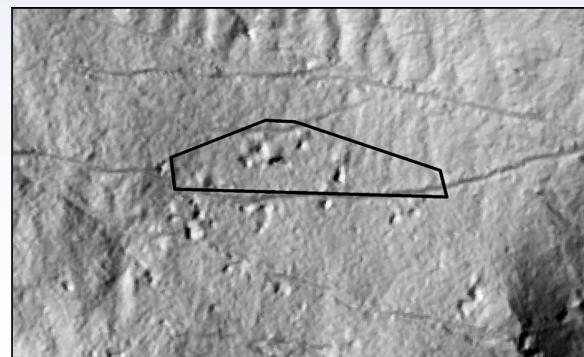
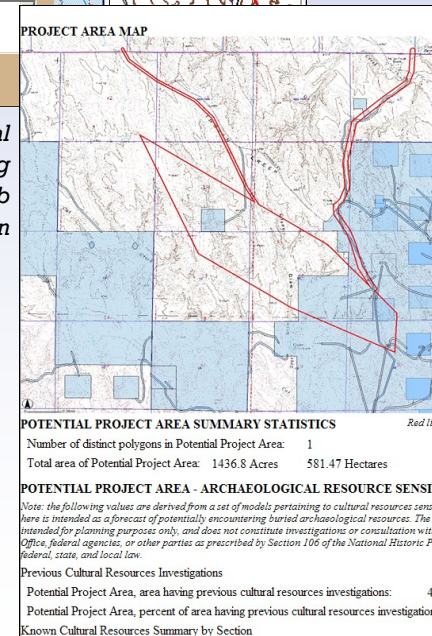
3D Block Diagram of Pollution Plumes

## INFORMATION SYSTEMS

- Needs Assessment
- Application Architecture
- Database Design
- Application Development
- Database Programming and Implementation
- System Implementation and Deployment
- IT Project Management



Environmental Planning GIS Web Application



LiDAR Analysis of Cultural Features